

# Center for Neighborhoods



Week 4  
Neighborhood Institute Spring 2023

---

---

---

---

---

---

---

---

Center for  
Neighborhoods

## Welcome to Week 4

- Housekeeping
- Homework
- Understanding Your City
- Ideal Neighborhood Exercise
- Project Introduction
- Wrap-Up



---

---

---

---

---

---

---

---

Center for  
Neighborhoods

Review:  
Asset Based Community Development  
(ABCD)

abcd  
INSTITUTE



---

---

---

---

---

---

---

---




---

---

---

---

---

---

---

---

Center for  
Neighborhoods

## Review: Three Challenges

Interview a neighbor?

Community Toolbox?

What LMPD Division do you live in?

---

---

---

---

---

---

---

---

Center for  
Neighborhoods

## Understanding Your City: How to assess your neighborhood!

1. Laying the foundation:  
key concepts & terminology
2. Application:  
Questions to ask  
when out in your  
neighborhood
3. Examples!

---

---

---

---

---

---

---

---

### What is an assessment and why are they important?

A process for understanding:

- Historical context
- Existing conditions
- Policies that shape the world we engage

*Assessments help us understand where we've come from and where we are, to better shape our future.*

---

---

---

---

---

---

---

---

### Why Assess Your Neighborhood?

- Understanding Existing Conditions
- Engagement Opportunity
- Address Concerns
- Basis for a plan of action



---

---

---

---

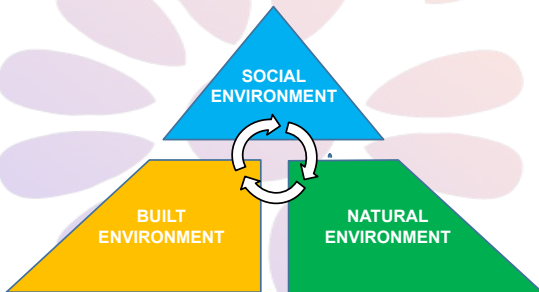
---

---

---

---

### Understanding your environment



---

---

---

---

---

---

---

---



Natural Environment

---

---

---

---

---

---

---

---



Built Environment

---

---

---

---

---

---

---

---



Social Environment

---

---

---

---

---

---

---

---



---

---

---

---

---

---

---

---



---

---

---

---

---

---

---

---



---

---

---

---

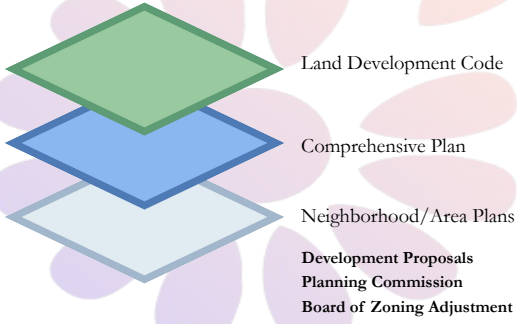
---

---

---

---

# Local Regulatory Framework



<https://louisvilleky.gov/government/advanced-planning/plans-and-studies>

---

---

---

---

---

---

---

---

# Terminology: Zoning and Form

ZONING	USE	DENSITY
--------	-----	---------

What

- Residential
- Commercial
- Industrial

How

- Single-family, multi-family
- Restaurant, retail, automotive shop
- Distillery, chemical plant

How much

- Two-stories, ten-stories
- Convenient store, mall

---

---

---

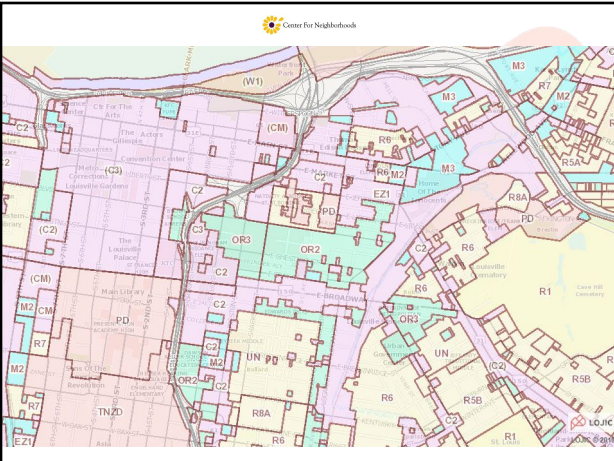
---

---

---

---

---




---

---

---

---

---

---

---

---

### Study

Histories

Maps

Images

Data

### Observe

Walk & Sit

Photo/Draw

Measure

Visit

### Ask

Residents

Visitors

Business

Institutions

---

---

---

---

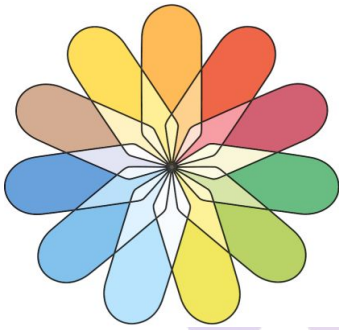
---

---

---

---

### Quality of Life



- Income & Jobs
- Housing Conditions
- Health
- Education
- Environmental Quality
- Personal Security
- Civic Engagement
- Work-Life Balance
- Infrastructure & Services
- Mobility
- Culture & Leisure

---

---

---

---

---

---

---

---

### Five Physical Features



Homes & Gardens



Streets



Neighborhood Niches



Institutions



Public Space

---

---

---

---

---

---

---

---

## Five Organizing Themes



---

---

---

---

---

---

---

---

## How do you read the street?



---

---

---

---

---

---

---

---

## How do you read the street?



---

---

---

---

---

---

---

---



How does perspective change your assessment?



---

---

---

---

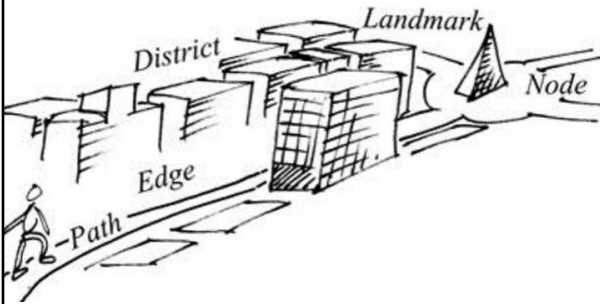
---

---

---

---

## Terminology



---

---

---

---

---

---

---

---

Which one is the greater landmark?



---

---

---

---

---

---

---

---

What are the uses? Where's the edge?



---

---

---

---

---

---

---

---

Where's the path?



---

---

---

---

---

---

---

---

Where's the path?



---

---

---

---

---

---

---

---

# Dangerous by Design: National Report

<https://www.heartrowtham.ca.org/dan> -design/



---

---

---

---

---

---

---

---

# Dangerous by Design, continued...



---

---

---

---

---

---

---

---

Now, how do you apply these concepts to read this block?



---

---

---

---

---

---

---

---

# Use Your Head, Hands, and Heart to ASK & LISTEN

## Tools & Tips:

**Public School Teachers**  
Conversations, Surveys

**Civic, Faith and Business Leaders**  
One on Ones, Community Tours

**Police Ride Along**  
Division Resource Officers

**Residents . . . your neighbors!**  
Conversations, Surveys



---

---

---

---

---

---

---

---

# Use Your Head, Hands, and Heart to STUDY

## Resources:

**Demographic Analysis**  
US Census, American Community Survey  
<https://factfinder.census.gov/faces/nav/jsf/pages/index.xhtml>

**Neighborhood Histories**  
Encyclopedia of Louisville, UofL Archives, Filson  
<https://librar.louisville.edu/archives/home>

**Case Studies-Best Practices**  
American Planning Association – Great Places Designation  
<https://planning.org/greatplaces/>

**More coming in Week 6!**  
LOJIC, PVA, Secretary of State, Open Street Maps and more....



---

---

---

---

---

---

---

---

# Use Your Head, Hands, and Heart to STUDY

## Existing Louisville Reports:

**Health Equity Report**  
Center For Health Equity at Louisville Metro Public Health and Wellness  
<https://louisvilleky.gov/government/center-health-equity/health-equity-report>

**State of Housing Report**  
Metropolitan Housing Coalition  
<https://metroplanninghousing.org/annual-reports/>

**Neighborhood Profiles**  
Metro United Way / Kentucky State Data Center  
[http://ksdc.louisville.edu/research/sponsored\\_projects/louisville-neighborhood-profiles/](http://ksdc.louisville.edu/research/sponsored_projects/louisville-neighborhood-profiles/)

## Additional Resources:

The Encyclopedia of Louisville  
Images of America: Louisville's Historic Black Neighborhoods  
UofL Digital Photo Archives  
<https://hyku.library.louisville.edu/>  
LFPL Historic Newspapers Archives  
<https://www.lfpl.org/research/Subjects/Newspapers.php>

---

---

---

---

---

---

---

---

# Using Your Head, Hands, and Heart to OBSERVE

**Go on a walk! (Photo Safari)**  
Walk, snap, gather & report



**Windshield/Walking Survey**  
[http://ctb.ku.edu/en/table-of-contents/Chapter\\_3](http://ctb.ku.edu/en/table-of-contents/Chapter_3)



**Walking Audit**  
[http://www.pedbikeinfo.org/planning/tools\\_audits.cfm](http://www.pedbikeinfo.org/planning/tools_audits.cfm)



**Asset Mapping**  
Talk to us!

**Quality of Life Assessment Tools**  
Food, Services, Parks, Traffic, etc.

Neighborhood Walkability: 10-15 min. for 1/4 mile		Neighborhood Safety	
Category	Score	Category	Score
1. Sidewalk		1. Sidewalk	
2. Crosswalk		2. Crosswalk	
3. Street lighting		3. Street lighting	
4. Traffic volume		4. Traffic volume	
5. Traffic speed		5. Traffic speed	
6. Pedestrian volume		6. Pedestrian volume	
7. Pedestrian volume		7. Pedestrian volume	
8. Pedestrian volume		8. Pedestrian volume	
9. Pedestrian volume		9. Pedestrian volume	
10. Pedestrian volume		10. Pedestrian volume	

---

---

---

---

---

---

---

---

---

---

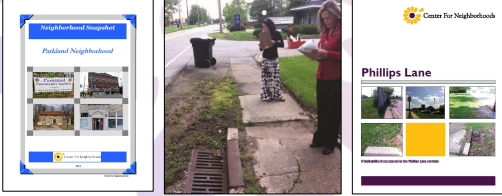
---

---

## More Resources for STUDY and OBSERVE:

**Neighborhood Assessments**  
<https://www.centerforneighborhoods.org/neighborhood-assessments>

**Walkability Assessments**  
<https://does.wixstatic.com/ugd/c8e6614b93d668bd0b47dda85135bf0d79733c.pdf>




---

---

---

---

---

---

---

---

---

---

---

---

## Additional reading for nerds

- On Looking: A walker's guide to the art of observation* - Alexandra Horowitz
- The Image of the City* - Kevin Lynch
- How to Read the American City* - Grady Clay
- The Death & Life of Great American Cities* - Jane Jacobs
- The Color of Law* – Richard Rothstein
- Neighbors and Neighborhoods* - Sidney Brower
- Mismatch: How Inclusion Shapes Design* – Kat Holmes

- Movie: “Citizen Jane: Battle for the City”
- Movie: “Design for All”

---

---

---

---

---

---

---

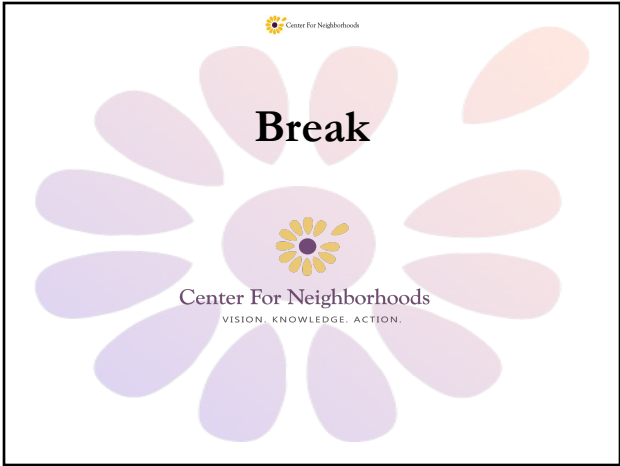
---

---

---

---

---



---

---

---

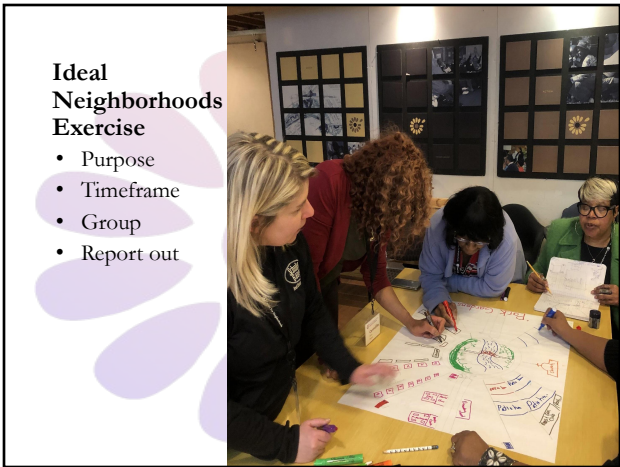
---

---

---

---

---



---

---

---

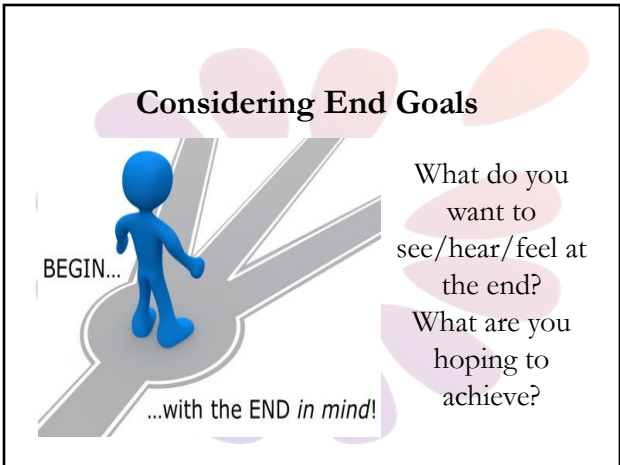
---

---

---

---

---



---

---

---

---

---

---

---

---



### Ideal Neighborhoods Exercise, continued...

- Public Space
- Public Services
- Infrastructure
- Housing
- Transportation

---

---

---

---

---

---

---

---

---

---

---

---

### Add to Your Assessment Toolbox: Mapping as a Tool for Change



- 1) Identify neighborhood assets
- 2) Create a resource "catalogue" those assets
- 3) Build relationships with your neighbors as you map together!

---

---

---

---

---

---

---

---

---

---

---

---

### Neighborhood Data & Mapping Resource Hub

<https://center-for-neighborhoods-neighborhood-resource-center-cfn.hubarcgis.com/>

Center For Neighborhoods Neighborhood Mapping & Data Resource C... More >

#### Interactive Maps:

<p>Center for Neighborhoods NeighborMap Louisville's interactive NeighborMap: Discover neighborhood assets and resources, links to printable</p>	<p>Louisville Neighborhood Demographics, Select ACS 2016 Louisville Neighborhood Demographics, Select ACS 2016 5-Year Estimates</p>	<p>500 Cities: Metro Louisville Health Outcomes 500 Cities Louisville, A Center for Neighborhoods Story Map illustrating major health outcomes in Louisville, KY</p>
--	---	--

---

---

---

---

---

---

---

---

---

---

---

---

Next Week:

- Community Organizing
- Community Engagement
- Effective Media & Communication

---

---

---

---

---

---

---